

Through our concerted efforts at planning and data collection, Georgia is much better prepared for drought.



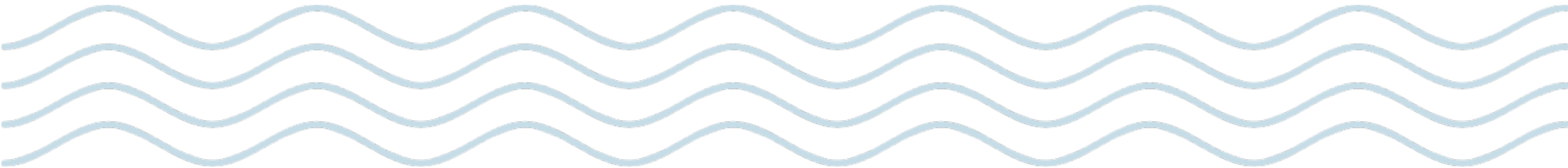
Georgia has embraced water planning at the state and regional levels.



Agricultural water meters tell us how much water gets used.



Georeferenced databases tell us where water is used and where conservation measures are in place.



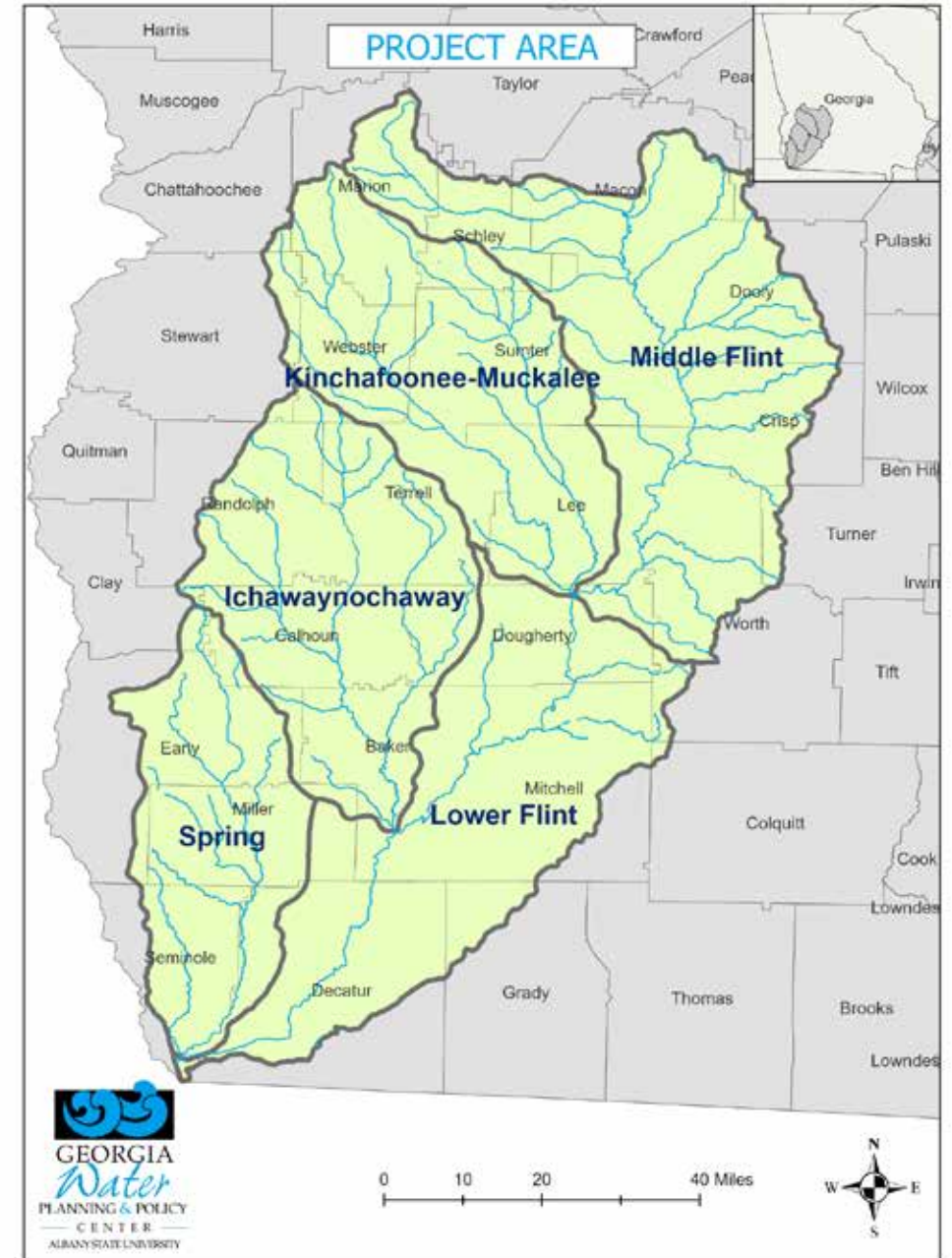
Agricultural Water Source Conversion for Streamflow Resilience

- \$49.8 million preliminary award
- Primary Objective: Conversion of surface water withdrawals in the Lower Flint River Basin to deep groundwater sources
- Partnership:
 - Georgia Water Planning & Policy Center
 - Georgia Environmental Protection Division
 - Golden Triangle Resource Conservation & Development Council



Project Implementation

- Five-year implementation timeframe
- Project Advisory Board
- Project area – Lower Flint River Basin
- Initial focus for implementation in Ichawaynochaway Creek





Project Activities

- Installation of 242 deep groundwater wells at sites of existing agricultural surface water withdrawals
- Conservation planning at each participating farm
- Environmental monitoring and assessment of groundwater aquifers and aquatic ecosystems
- Flow augmentation system improvements
- Stakeholder-driven water resources and endangered species management planning

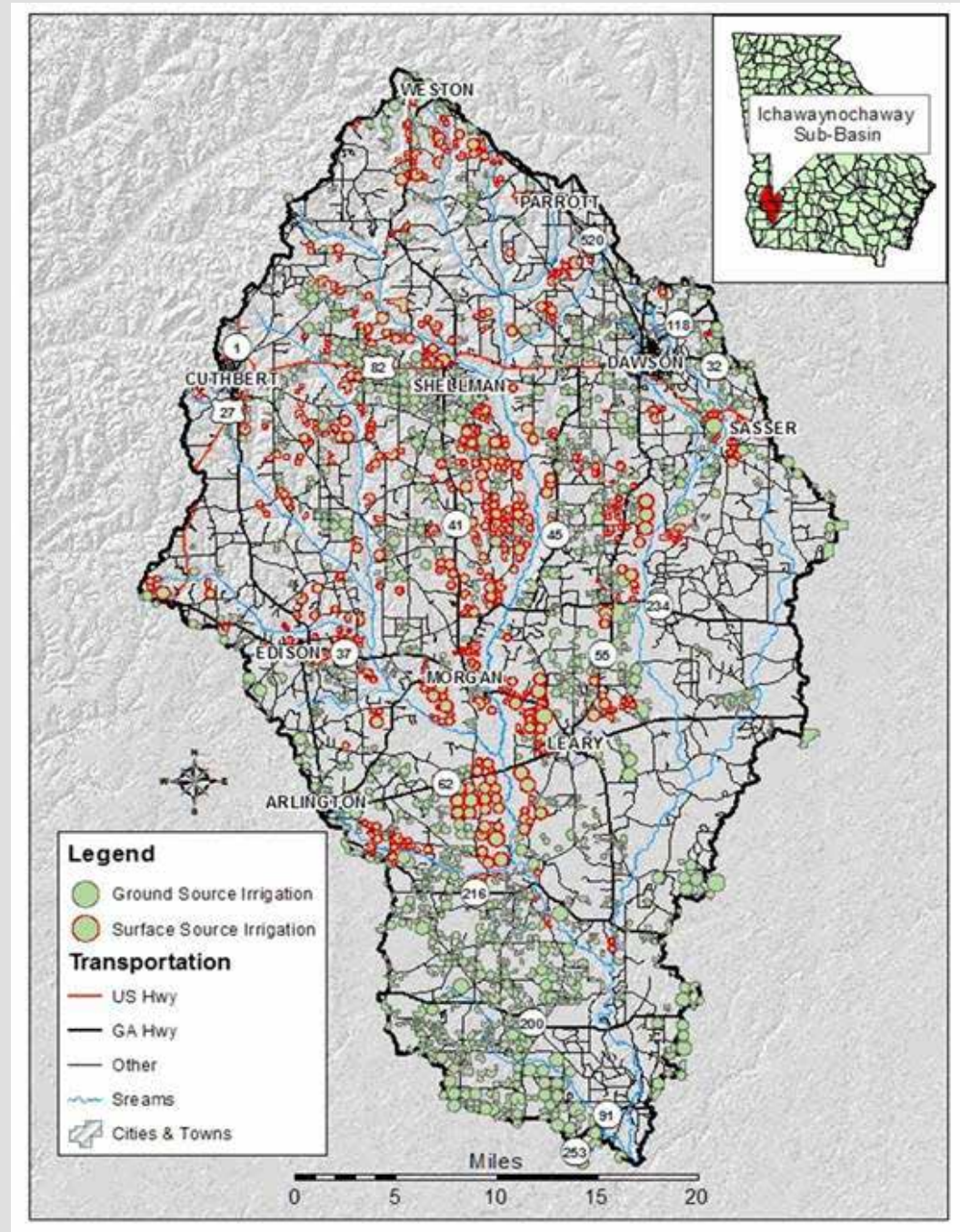


OBJECTIVES

- Test **innovative approaches** in water management and identify new paths forward to water security for agriculture and natural systems in Southwest Georgia
- Provide **field-tested data** on producer preferences with respect to irrigation suspension via an auction format to inform policy
- Add to the **toolbox** of drought management policies and incentives
- Work **collaboratively** to reflect the needs and interests of stakeholders and make policy and management recommendations together (as appropriate)

PROJECT AREA

Ichawaynochaway Creek Irrigated Acreage



CONTRACT OPTIONS

	Contract A	Contract B	Contract C
Length	One year	One year	One year
Water Use Limits	No water use from contract execution to Dec 31*	Water use limited to 6" (per acre) from contract execution to Dec 31*	If 7-day average flow at Milford USGS gage is below 50 cfs before October 31, no water use for rest of year*
Payments (set by auction)	Per acre payment [BID] if irrigation is suspended	Per acre payment [BID] if irrigation is suspended	Stand-by payment of \$35 per acre Per acre payment [BID] if irrigation suspended mid-season

*Based on meter readings.



AUCTION IMPLEMENTATION

- March 14-18
- On-line auction portal
- Field site “office hours” in region during auction period to assist farmers with bid process (Dawson, Shellman, Newton)
- Recruitment via field visits, commodity meetings, email, website, word of mouth, \$250 participation payment
- Incentive contracts with selected bidders by end of April



2022 Incentives Auction

Total Bids: 721 bids on 294 fields from 87 bidders

	A Full Season Suspension	B Volumetric Limit (6" for Season)	C Standby Option (Suspend Only if Flows Drop below Drought Threshold)
Bids Received	254	246	221
Acres	15,686	15,627	13,845
Bids	\$100 to \$2,500 per acre	\$75 to \$2,100 per acre	\$50 to \$2,500 per acre
Contracts			<i>ongoing</i>

